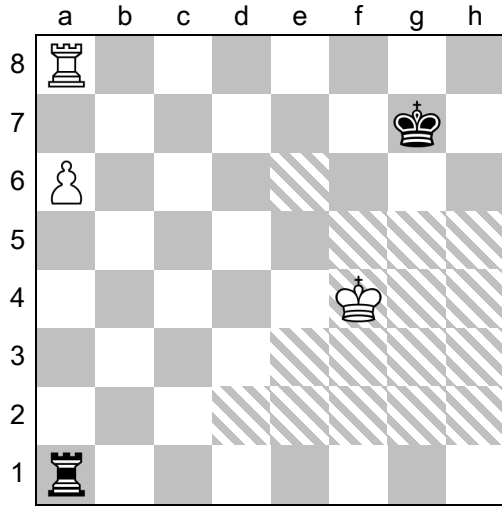


Vancura Positions



White to Move

- 1A)** 1. ♖e5!+- ♖a5+
2A) 2. ♔d4! ♔f7 3. ♔c4
3A Fortress of Solitude) 3... ♔f6 4. ♔b4 ♖a1 5. ♔c5 ♖c1+ 6. ♔b6 ♖b1+ 7. ♔a7 ♔e7 8. ♖b8! ♖c1 9. ♔b7 ♖b1+ 10. ♔a8 ♖c1 11. a7
4A Queen v. Rook) 11... ♔d6 12. ♔b7! ♖b1+ 13. ♔c8 ♖c1+ 14. ♔d8 ♖g1 15. ♖b6+! ♔c5 15. ♖c6+!
5A) 15... ♔xc6 16. a8♙++-
5B) 15... ♔d5 16. ♖a5 ♖g8+ 17. ♔c7 ♖g7+ 18. ♔b6 ♖g6+ 19. ♔b5+-
4B King Laddering Back) 11... ♔d7 12. ♔b7! ♖b1+ 13. ♔a6 ♖a1+ 14. ♔b6 ♖b1+ 15. ♔c5+-
3B Seventh Rank Skewer) 3... ♔e7 4. a7 ♔f7 5. ♖h8! ♖xa7 6. ♖h7+! & 7. ♖xa7
2B) 2. ♔d6! ♖f5 3. ♖a7+! ♔f8!?
6A Lateral Rook Bridge) 4. ♔e6! ♖a5 5. ♖a8+ ♔g7 6. ♔d7 ♖f5 7. ♖e8 ♖a5 8. ♖e6 ♔f7 9. ♖c6 ♖a1 10. ♔c7 ♔e7 11. ♔b7 ♔d7 12. ♖b6 ♖c1 13. a7 ♖c7+ 14. ♔a6 ♖c8 15. ♖b8+-
6B Vancura Displaced NW=) 4. ♔c7? ♖f7+ 5. ♔b8 ♖f6!=
2C e6-h-file Vancura Backdoor) 2. ♔e6? ♖h5!=
7A) 3. ♔d7 ♖h6! 4. ♔c7 ♖f6! 5. ♔b7 ♖f7+! = See 15A.
7B Seventh Rank Draw) 3. a7 ♖a5! = If ♔b5/b6/b7, ♖b1+ and ♖a1. If ♔b2, ♖a5. Otherwise ♔h7/g7 to mark time.
7C) 3. ♖a7+
8A Vancura Displaced N=) 3... ♔g8! 4. ♔d6 ♖h6+! 5. ♔c7 ♖f6! 6. ♖a8+ ♔g7 7. ♔b7 ♖f7+! = See 15A.
8B Eight Rank Danger) 3... ♔f8? 4. ♖f7+!+- ♔g8/e8 5. a7 ♖a5 6. ♖c7/h7 ♖a6+ 7. ♔d5 ♖a5+ 8. ♔c6+-.
 Rook checks on 8th rank and queens.
1B Rook Beside Pawn) 1. ♔e4!??+- ♖a5 2. ♔d4 ♖f5 3. ♖a7+ ♔f6!?
9A Crucial Tempo) 4. ♖h7!
10A White Outpaces to c7) 4... ♔g6 5. ♖b7 ♖a5 6. a7! ♔f6 7. ♔c4 ♔e6 8. ♔b4 ♖a1 9. ♔c5 ♖a2 10. ♔c6 ♖c2+ 11. ♔b6 ♖b2+ 12. ♔c7 ♖c2+ 13. ♔b8+-
10B) 4... ♖a5 5. a7 ♔e6 6. ♖h6+ ♔f7 7. ♖h8!+- See 3B.
9B) 4. ♖b7? ♖a5= 5. a7 ♔e6! = See 14A.

White to Move (cont'd)

- 1C)** 1. ♔f5? ♖a5+! =
11A) 2. ♔e6 ♖h5! = See 2C.
11B) 2. ♔e4 ♖b5 = See 13A.
-
- Black to Move (WK in Hatched Area is Drawable)**
- 12A)** 1... ♖a5! =
13A) 2. ♔e4 ♖b5
14A Black Outpaces to c7) 3. ♖a7+ ♔g6! 4. ♖b7 ♖a5! 5. a7 ♔f6! 6. ♔d4 ♔e6! 7. ♔c4 ♔d6! 8. ♔b4 ♔c6 =
14B Vancura Position) 3. ♔d4 ♖b6! 4. ♔c5 ♖f6
15A Vancura Vertical Perpetual) 5. ♔b5 ♖f5+! 6. ♔b6 ♖f6+! 7. ♔b7 ♖f7+! =
15B Vancura Horizontal Oscillation) 5. ♔d5 ♖b6 6. ♔e5 ♖c6 7. ♔d5 ♖f6 8. ♔d4
16A) 8... ♖b6 =
16B) 8... ♖f4+? ♔e5!+-
13B) 2. ♖a7+ ♔g6 3. ♔e4 ♖b5 4. ♖b7 ♖a5! = See 14A.
12B) 1... ♖c1! ?
17A Rc5 Save) 2. ♖a7+ ♔g6! 3. ♖b7 ♖c5! See 14A.
17B) 2. ♔e5 ♖c6! = See 15B.
12C) 1... ♖a4+ ?
18A) 2. ♔e5!+- ♖a5+ See 1A.
18B) 2. ♔f5? ♖a5+ = See 1C.
12D) 1... ♖b1? 2. ♖a7+!
19A Skewer Switchback) 2... ♔f6 3. ♔e4! ♔e6 4. ♖a8! ♖a1 5. a7! ♔f7 6. ♖h8! See 3B.
19B Rook Behind Pawn) 2... ♔g6 3. ♖b7! ♖a1 4. ♖b6+ ♔h5 5. ♔f5 ♖f1+ 6. ♔e6 ♔g5 7. ♖b5+ ♔g6 8. ♖a5+-
12E) 1... ♖d1 ?
20A) 2. ♔e5! ♖f1 3. ♖b8! ♖a1 4. ♖b7+ ♔g6 5. a7 ♖a6 6. ♖b6+ ♖xb6 7. a8♙+-
20B) 2. ♔e4? ♖d6! ♔e5 ♖b6 = See 15B.
12F) 1... ♖e1 ?
21A) 2. ♔f5!
22A) 2... ♖f1+
23A) 3. ♔e5!+- ♖h1
24A White Beelines to b8) 4. ♖a7+! ♔g6 5. ♖b7 ♖a1 6. a7 ♖a2 7. ♔d6+-
24B) 4. ♔e6? ♖h6+ 5. ♔d7 ♖f6 = See 15A.
23B) 3. ♔e6? ♖f6+ = See 14B.
23C) 3. ♔e4? ♖f6! = See 15B.
22B) 2... ♖h1 3. ♖a7+! ♔h6 4. ♖b7 ♖a1 5. a7 ♖a2 6. ♔e5+-
21B) 2. ♖a7+? ♔f6! = 3. ♖b7 ♖a1 = See 14A.
12G) 1... ♖f1+? 2. ♔e5! ♖f6? 3. ♖g8+! ♔f7 4. ♖f8+!+-
12H) 1... ♖g1?!
25A) 2. ♔f5! ♖a1 3. ♔e5!+- See 1A.
25B Vancura Displaced SE=) 2. ♔e5? ♖g6 3. ♖a7+ ♔h6 =
25C) 2. ♔e4? ♖g6! =
12I Vancura Displaced S+) 1... ♖h1? 2. ♖a7+! ♔g6 3. ♔e5 ♖e1+ 4. ♔d6 ♖d1+ 5. ♔c7 ♖c1+ 6. ♔b8 ♖c6 7. ♔b7 ♖f6 8. ♖a8! ♖f7+ 9. ♔b6 ♖f6+ 10. ♔b5 ♖f5+ 11. ♔c4 ♖f4+
26A) 12. ♔d5 ♖f5+ 13. ♔e4 ♖a5 14. ♔d4 See 2A.
26B Black Outpaces to c7) 12. ♔d3? ♔g7 = 13. ♖a7+ ♔g6! 14. ♖b7 ♖a4 15. a7 ♔f6 16. ♔c3 ♔e6 17. ♔b3 ♖a1! 18. ♔4 ♔d6! =